
Project-Based Learning Fast Blast

Brandon Haas
Elisabeth Johnston
Robin DeRosa

OPENCoLab

OPEN LEARNING & TEACHING COLLABORATIVE

PLYMOUTH STATE UNIVERSITY



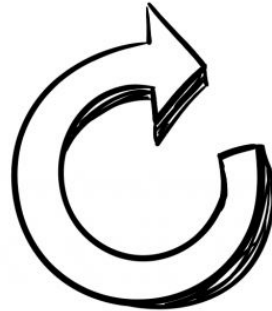
This is orientation.



Considering Key Elements of Project-Based Learning

1. Using your example scenario, fill in the data retrieval chart.
 2. In groups, explain your scenario
 3. Together identify a list of critical elements across all three examples.
-

Elements of Project-Based Learning



Essential Elements

A Challenging Problem or Question

The project is framed by a meaningful problem to be solved or a question to answer, at the appropriate level of challenge



Essential Elements

Sustained Inquiry

Students engage in a rigorous, extended process of posing questions, finding resources, and applying information.



Essential Elements



Authenticity

The project involves real-world context, tasks and tools, quality standards, or impact, or the project speaks to personal concerns, interests, and issues in the students' lives.

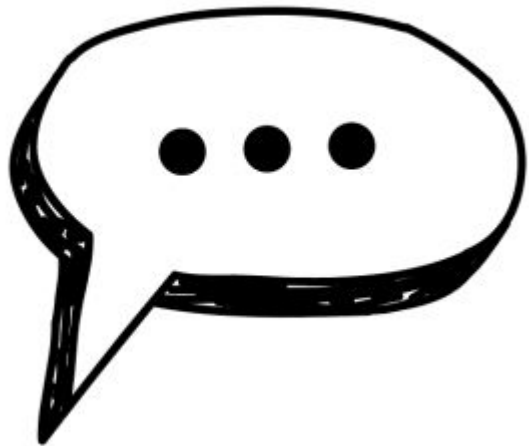
Essential Elements

Reflection

Students and teachers reflect on the learning, the effectiveness of their inquiry and project activities, the quality of student work, and obstacles that arise and strategies for overcoming them.



Essential Elements



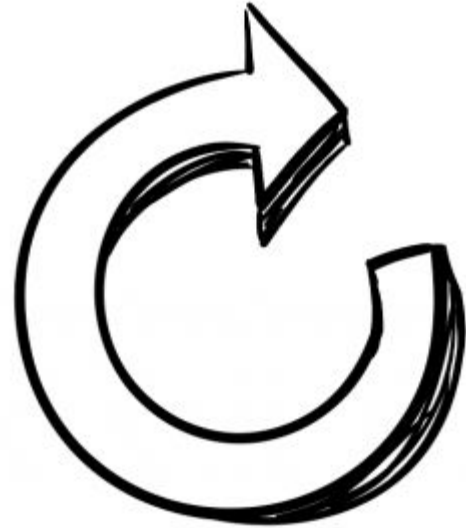
Student Voice & Choice

Students make some decisions about the project, including how they work and what they create.

Essential Elements

Critique & Revision

Students give, receive, and apply feedback to improve their process and products.



Essential Elements

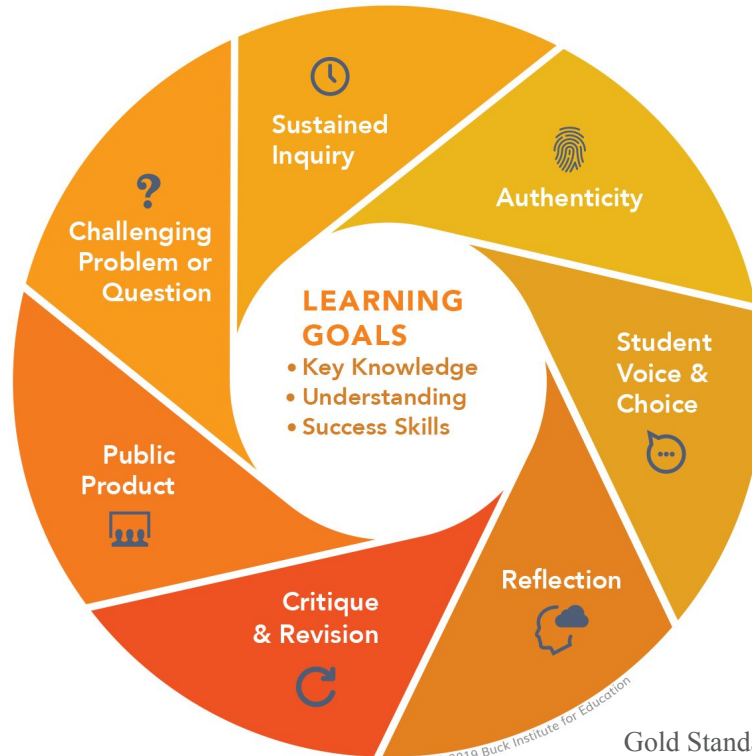
Public Product

Students make their project work public by explaining, displaying and/or presenting it to audiences beyond the classroom.



Gold Standard PBL

Seven Essential Project Design Elements



Project-Based Learning: A definition

Project Based Learning is a teaching method in which students gain knowledge and skills by working for an extended period of time to investigate and respond to an authentic, engaging, and complex question, problem, or challenge.

Project-Based vs. Project-Oriented

-Another way to think about these terms is related to if the project is “dessert” or the “main course”. When does the project happen? Does the learning occur through the project or is it taught prior to the project? PBL uses the project for the learning (Buck Institute, n. d.).



www.shutterstock.com • 4473202

Project-Based

OR



www.shutterstock.com • 1131133466

Project-Oriented

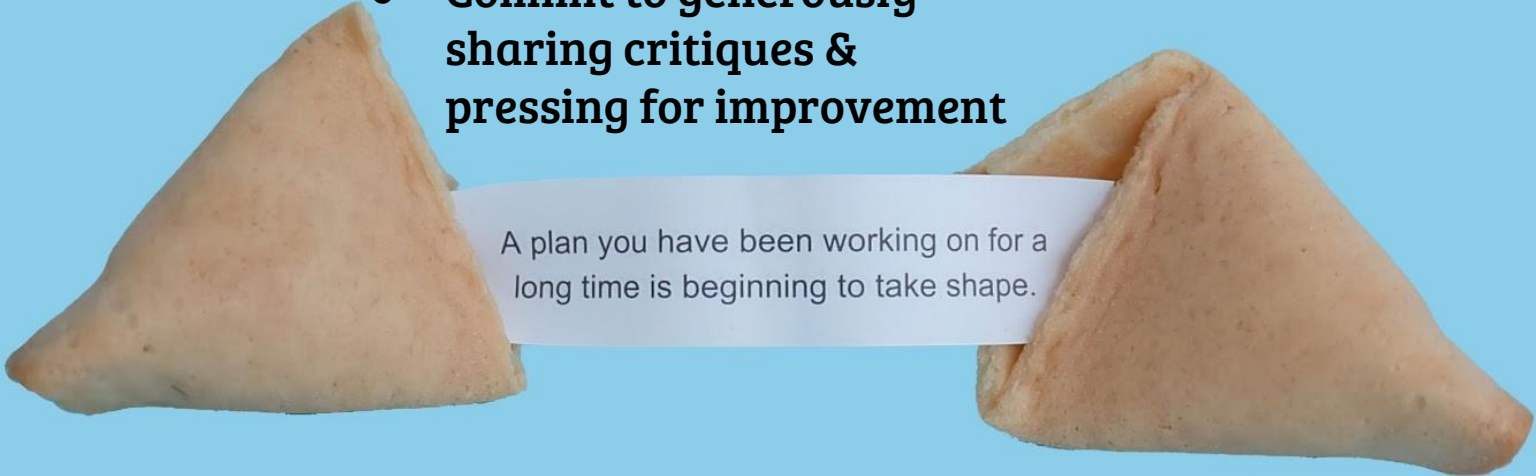
Further Reading

- [Buck Institute- Research and Evidence](#)
 - [Essential Project Design Elements](#)
 - [Project Based Teaching Practices](#)
 - [Edutopia- Project Based Learning](#)- This resource includes several articles from different perspectives about Project Based Learning.
 - [Seven Essentials for Project Based Learning](#)
 - [Stanford d.school- Designing for Social Systems](#)
 - [Cult of Pedagogy- Project-Based Learning: Start Here](#)
 - [Essential Project Design Elements Checklist](#)
 - [Project Planner from myPBLworks.org](#)
-

Examples

- FYS- Students learn about a wicked problem and then decide how they would like to address this problem. Using Design Thinking, students consider what they could do to reach outside the classroom. In one section, FYS students designed a service learning experience connected to equity in education to participate in the PSU Day of Service in the fall.
 - PBL Examples used in Fast Blast-
https://my.pblworks.org/projects?gclid=EAlaIQobChMI666pvJey4QIVF4nICh1JzAYrEAAYASAAEglr_D_BwE
-

- **Commit to university-level cohesion around cluster pedagogy**
- **Commit to using a common language (not as your *only* language!)**
- **Commit to being open to additional PBL possibilities in your teaching**
- **Identify PBL in your teaching**
 - **Align language in that work to PSU language**
 - **Inform the CoLab of this work**
- **Commit to generously sharing critiques & pressing for improvement**



A plan you have been working on for a long time is beginning to take shape.

Participate in the CPLC!

CLUSTER PEDAGOGY LEARNING COMMUNITY

Three Tracks

- Main Track
 - Exam Week Sessions
 - June 4 & July 30 Sessions
 - University Days Session
 - Year-long Program
- TWP Track
 - Plus June 4 & July 30 Extensions
- Open Ed Track
 - Plus May 28-30 ATI
 - Plus January 2020 Event

*If you didn't apply
for this May's
start, please note
we will run this
again in a year!*

Name

Email

The PBL Clustery Thing

Collaborators

Check Boxes

5 minutes!

bit.ly/pblfastblast

